

GLC REPORT NO.

J60846891



GLC
Gemological Laboratory
Center of Europe

Gemological Laboratory Center

DESCRIPTION

January 01, 2024

GLC Report Number **J60846891**

Type of Jewelry **Ring**

Material **14 Karat White Gold**

Jewelry Weight **4.02 GR**

Total Carat Weight **4.31 CT**

Center Stone

Stone Type **Diamond**

Shape and Cutting Style **Round Brilliant**

Carat Weight **3.01 CT**

Color Grade **E**

Clarity Grade **VVS2**

Cut Grade **Excellent**

Side Stones

Stone Type **Diamonds**

Shape and Cutting Style **Round Brilliant**

Carat Weight **1.30 CT**

Color Grade **D - E**

Clarity Grade **VVS**

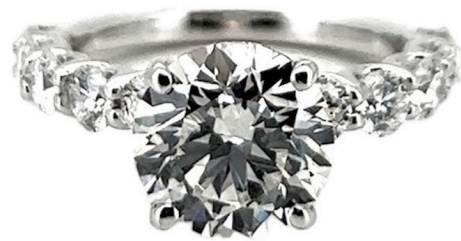
Cut Grade **Excellent**

Comments

*Lab-Grown Diamonds

"EXCELLENT IDEAL FINISH" - The quality of the finish of this jewelry achieves Excellence in symmetry of proportions.

Tested and graded as mounting permits. Grades and weights might be approximate.



GRADING SCALES

GLC COLOR SCALES		GLC CLARITY SCALES		GLC CUT SCALES	
COLORLESS	D	VERY VERY SLIGHTLY INCLUDED	FLAWLESS	EXCELLENT	
	E		INTERNALLY FLAWLESS		
	F		VVS1		
NEAR-COLORLESS	G	VERY SIGHTLY INCLUDED	VVS2	VERY GOOD	
	H		VS1		
	I		VS2		
FAINT	J	SIGHTLY INCLUDED	SI1	GOOD	
	K		SI2		
	L		I1		
VERY LIGHT	M	INCLUDED	I2	FAIR	
	N		I3		
	O				
LIGHT YELLOW	P			POOR	
	Q				
	R				
	S				
	T				
	U				
	V				
	W				
	X				
	Y				
	Z				



The result documented in this report refer only to the diamond described, and was obtained using the techniques and equipment available to GLC at the time of examination. This report is not a guarantee or valuation. For additional information and important limitations and disclaimers, please visit GLC-LAB.COM



THE SECURITY FEATURES IN THIS DOCUMENT, INCLUDING THE HOLOGRAM, SECURITY SCREEN AND MICROPRINT LINES, IN ADDITION TO THOSE NOT LISTED, EXCEED DOCUMENT SECURITY INDUSTRY GUIDELINES.

The above reported characteristics of the diamond and gemstone were based on the data collected by using a variety of gem testing tools, such as an electronic balance, a loupe with 10x magnification, a millimeter gauge, master stones, UV light sources, a proportionscope, fiber optic illumination, daylight balanced lighting, etc